

Summit County Influenza Surveillance, 2008-2009 – Supplemental

Surveillance Week 45 (August 30-September 5, 2009)
CDC Week 35

Next week will be the final week of the 2008-2009 Influenza Surveillance. The first report of the 2009-2010 Summit County Influenza Surveillance will be the weekend of September 26.

There are some indications that influenza activity is increasing in Summit County. For this reporting week, there were 5 positive laboratory tests reported (all influenza A). From late reporting there were also 5 positive tests last week. There was one confirmed influenza hospitalization reported for this week. The emergency departments were seeing more persons coming in with respiratory and constitutional symptoms. Pharmacy antiviral prescriptions increased.

Ohio's influenza activity level is at **local activity**. The activity level defines geographic distribution. It does not relate to the number of cases or severity of illness.

The CDC began its 2009-2010 influenza surveillance this week. From the CDC's influenza report for week 35, national influenza activity is higher than expected this time of year. Pneumonia and influenza deaths were below the epidemic threshold but visits to physicians for influenza-like illness were above the threshold. The laboratory positivity rate was 20.5% (last week was 17.3%). About 97% of all subtyped influenza labs reported to CDC was 2009 pandemic A(H1N1). Influenza activity: Widespread – 11 states (up from 6 last week); Regional – 13 states and Puerto Rico (same as last week); Local – 10 states and D.C. (same as last week); Sporadic – 14 states (down from 19 as last week); No activity – 2 states (same as last week). There was one influenza-associated pediatric death reported during this week due to 2009 pandemic A(H1N1) influenza.

From the WHO, the 2009 pandemic A(H1N1) influenza virus continues to be the dominant influenza virus worldwide. Active transmission continues in tropical regions of South and Southeast Asia. In the temperate regions of the southern hemisphere influenza activity continues to decrease or return to baseline levels. In the northern hemisphere, influenza activity is variable.

2008-2009 Participant Categories

3 residential institutions	5 Summit County emergency departments	8 laboratories	1 high school
2 pharmacy chains (20 stores)	University of Akron infirmary	7 nursing homes	1 workshop
11 family practice offices	10 elementary schools	3 middle schools	
AHD Health Data Management	EpiCenter		

CDC = Centers for Disease Control and Prevention WHO = World Health Organization

***Numbers on Y-axis of the graph reflect the following: (Note: the logarithmic graph does not show zero figures)

Number of influenza or influenza-like diagnoses by FP Centers, EDs, University of Akron infirmary, nursing homes, institutions

Total number of absentees (diagnosis not specified) for selected elementary, middle, high schools and workshop
Number of positive influenza cultures and antigen tests from area labs

Total number of four influenza antiviral medications sold in pharmacy chains

Number of pneumonia/influenza deaths reported to CDC by the Akron Health Department (these deaths occurred within the city of Akron, may include non-Akron and non-Summit County residents)

Number of confirmed influenza hospitalizations at Summit County hospitals

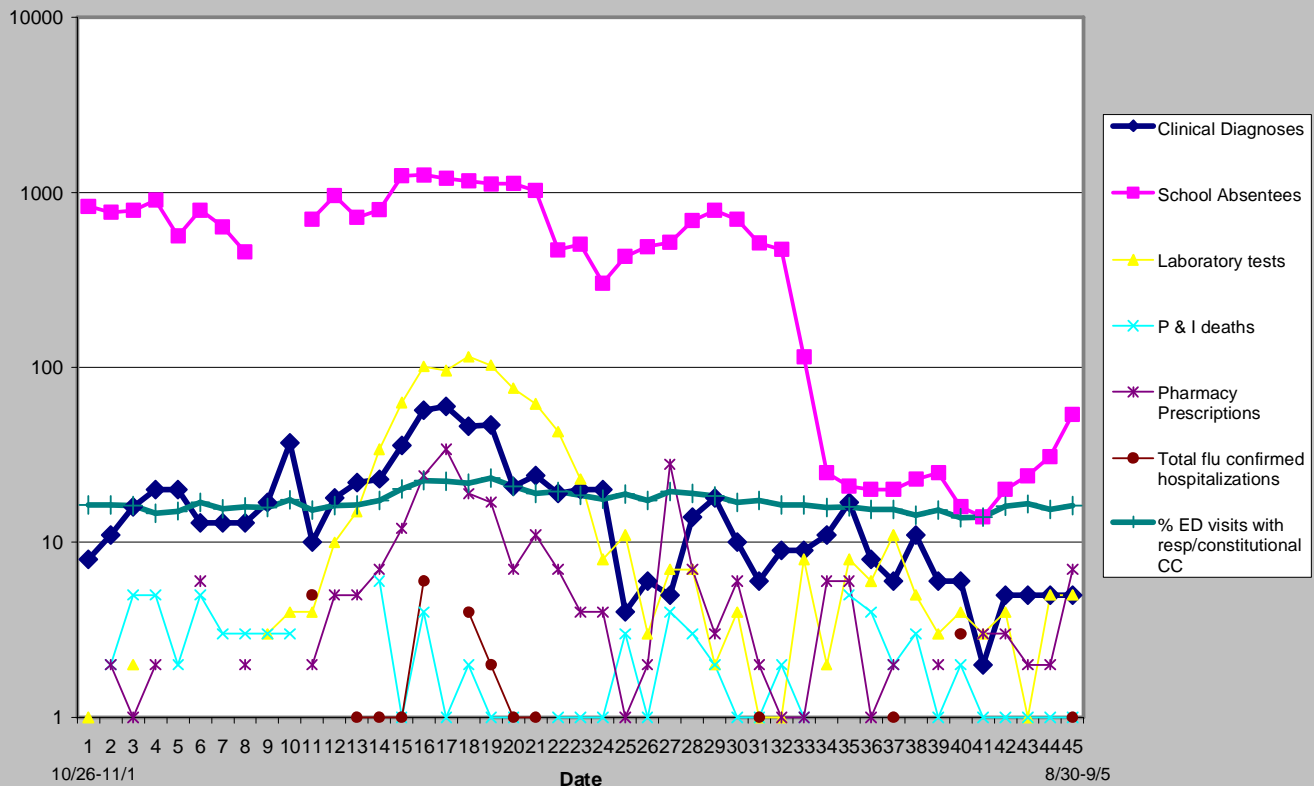
The percent of respiratory & constitutional visits per week from two hospitals that electronically report ED visits which are categorized into respiratory or constitutional syndrome based on chief complaint.

****Reporting from the participants may not be complete each week. Numbers may change as updated reports are received.**

Dr. M. Erme, Akron Health Department, 330-375-2145, Office of Disease Control and Surveillance web site
<http://www.ci.akron.oh.us/Health04/Epidemiology/control.htm>

September 13, 2009

**Summit County Influenza Surveillance 2008-2009
Week 45 (week ending 9/5/2009, CDC week 35)**



2009 Pandemic A H1N1 Influenza Summary

For the 2009-2010 influenza season, the CDC is monitoring hospitalizations with a positive influenza test or hospitalizations for influenza and pneumonia syndromes. Confirmation for 2009 pandemic A(H1N1) influenza is not necessary. This will look at the total influenza burden. For the first week of the 2009-2010 surveillance season, the number of hospitalizations were 1380 and 196 deaths. The website for CDC information is <http://www.cdc.gov/h1n1flu/>.

According to the World Health Organization's information as of September 11, there have been over 277,607 cases with at least 3205 deaths. This is an underestimation since countries no longer have to report individual case counts. Pandemic (H1N1) influenza virus continues to be the predominant circulating virus of influenza, both in the northern and southern hemisphere. All pandemic H1N1 2009 influenza viruses analyzed to date have been antigenically and genetically similar to A/California/7/2009-like pandemic H1N1 2009 virus. The WHO website is <http://www.who.int/csr/disease/swineflu/en/index.html>

As August 5, 2009, the Ohio Department of Health, in accordance with CDC guidelines, discontinued individual reporting of 2009 pandemic A(H1N1) cases. Ohio has had three deaths. The ODH website gives complete Ohio influenza information: http://www.odh.ohio.gov/landing/phs_emergency/swineflu.aspx.

Summit County has had 14 confirmed 2009 pandemic A(H1N1) influenza cases. Individual cases of H1N1 influenza are not reportable. Influenza associated hospitalizations (from any strain) are reportable to the local health department.

Summit County has created a new influenza website for information. The website is www.summitflu.org.