

Influenza Surveillance Report for Summit County, 2009-2010
Report #21: Surveillance Week ending February 13, 2010
Centers for Disease Control and Prevention (CDC) Week 6

Influenza Activity in Summit County

- There was not much change in influenza activity in Summit County.
- The EpiCenter average for adult emergency room visits for respiratory and constitutional complaints remained fairly steady at 20.22 % this period and 19.89 % last period
- The number of people diagnosed with influenza-like illness (ILI) increased to 65 compared to 48 for the previous period.
- There were no adult hospitalizations for influenza this period compared to 2 in the previous period.
- The number of lab tests being performed increased slightly with 18 tests being performed this period compared to 14 tests during the previous period. There were no positives.
- The number of school absences reported for this period was 7,201 which was a decrease from the previous period when 10,037 absences were reported. Some schools reported a shorter school week.
- The number of prescriptions of oseltamivir and zanamivir decreased to 3 for this period compared to 6 prescriptions in the previous period.
- The number of pneumonia-related deaths reported for the week decreased to 11 compared to 21 for the previous week.
- There were no influenza deaths reported.

Influenza Activity in Ohio (Source: Ohio Department of Health)

- Ohio's influenza activity was again **sporadic**.
- Data sources indicate both a decrease in the number of confirmed influenza-associated hospitalizations and in the levels of influenza-like illness in outpatient settings.
- Out of the 3,180 specimens tested at the ODH lab during this season, only 2 specimens have been positive for seasonal influenza; one was A (H1) and the other was A (H3). So far this season 1,191 specimens have tested positive for the 2009 pandemic A (H1N1). No specimens tested positive for 2009 pandemic A (H1N1) influenza this period.
- For the 2009-2010 season, there have been 3,213 influenza-associated hospitalizations and 1,478 have been laboratory confirmed as 2009 pandemic A (H1N1).
- There have been 10 confirmed influenza-associated pediatric mortalities for the 2009-2010 season of which 7 were confirmed 2009 pandemic A (H1N1). This includes one pediatric death in Summit County.
- Year-to-date there have been 51 confirmed 2009 pandemic A (H1N1) influenza-related deaths among hospitalized patients.

Influenza Activity in U.S. (Source: Centers for Disease Control and Prevention)

- No states reported **widespread** activity; 3 states had **regional** activity; 9 states and Puerto Rico reported **local** activity; 35 states and the District of Columbia reported **sporadic** activity, and 3 states and the U.S. Virgin Islands reported **no** activity.
- Influenza activity remained at about the same levels as the previous week.
- Two influenza-associated pediatric deaths were reported. These deaths occurred between January 31 and February 6, 2010. The 2009 pandemic A (H1N1) virus was associated with both deaths. Since April 26, 2009, there have been a total of 277 deaths in children associated with the 2009 pandemic A (H1N1) virus.
- The proportion of deaths attributed to influenza and pneumonia was slightly below the epidemic threshold as reported to the 122-Cities Mortality Reporting System. (7.7% compared to the national threshold of 7.8%)
- Since August 30, 2009, there have been 40,302 laboratory-confirmed influenza associated hospitalizations and 1,966 laboratory-confirmed deaths.

- For outpatient visits reported through U.S. Outpatient Influenza-like Illness Surveillance Network (ILINet), 2.1% were again due to influenza-like illness which was slightly below the expected baseline of 2.3 percent.
- 3,656 specimens were tested and 129 (3.5%) were positive for influenza and 3,527 (96.5%) were negative for influenza.
- There were 125 influenza A positives of which 53 (42.4 %) were 2009 pandemic A (H1N1) and 72 (57.6 %) subtyping was not performed. Four (3.1%) were positive for influenza B.
- Influenza B virus co-circulated at low levels with 2009 pandemic A (H1N1) virus.
- Majority of 2009 pandemic A (H1N1) viruses remain susceptible to oseltamivir but rare sporadic cases of oseltamivir resistant 2009 pandemic A (H1N1) viruses have been detected. All viruses tested remained sensitive to zanamivir.
- For additional information go to <http://www.cdc.gov/flu/weekly/fluactivity.htm>

Influenza Activity Worldwide (Source: World Health Organization- WHO)

- There have been 15,921 deaths reported.
- The situation remains at about the same level as the previous week.
- The 2009 pandemic A (H1N1) virus continues to be the predominant type of influenza circulating worldwide. However, an increasing proportion of seasonal influenza type B has been detected in China and low levels of seasonal H3N2 and type B viruses are circulating in parts of Africa and Asia.
- In North Africa, pandemic influenza transmission persists but substantial declines have been reported.
- In Sub-Saharan Africa, pandemic influenza virus activity levels have been sporadic.
- In Southeast Asia, several countries reported an increasing trend of respiratory disease activity but overall intensity remained low.
- In East Asia, transmission of pandemic influenza persists but has been steadily declining.
- In Europe, pandemic influenza continues to circulate throughout the central and southeastern parts and overall intensity remained low.
- In Central America and the Caribbean, pandemic influenza activity still persists but overall activity remained low or unchanged in most places.
- Sporadic cases of pandemic influenza continue to be reported in the temperate region of the southern hemisphere without evidence of sustained community transmission.
- **Recommendations were published for the composition of upcoming 2010-2011 influenza virus vaccine in the northern hemisphere:** They foresee a trivalent vaccine including also a 2009 pandemic influenza A(H1N1) strain: an A/California/7/2009 (H1N1)-like virus; an A/Perth/16/2009 (H3N2)-like virus*; and a B/Brisbane/60/2008-like virus.
- *A/Wisconsin/15/2009 is an A/Perth/16/2009 (H3N2)-like virus and is a 2010 southern hemisphere vaccine virus.
- For additional information go to: <http://www.who.int/csr/disease/swineflu/en/index.html>

Participants in Summit County Influenza Surveillance

| | | |
|---|--|-------------------------|
| 17 medical providers | 1 university health service | 13 laboratories |
| 1 workshop | 6 nursing homes | EpiCenter |
| 4 pharmacy chains | 3 residential institutions | 5 emergency departments |
| 3 health departments- vital records offices | 31 private/public/charter schools and 7 districts (121 school buildings) | |

Number of influenza or influenza-like diagnoses by medical practitioners, emergency departments, university infirmary, nursing homes, and institutions

Total number of absentees (diagnosis not specified) for selected schools and workshop

Number of positive influenza cultures and antigen tests from area labs

Total number of four influenza antiviral medications sold in pharmacy chains

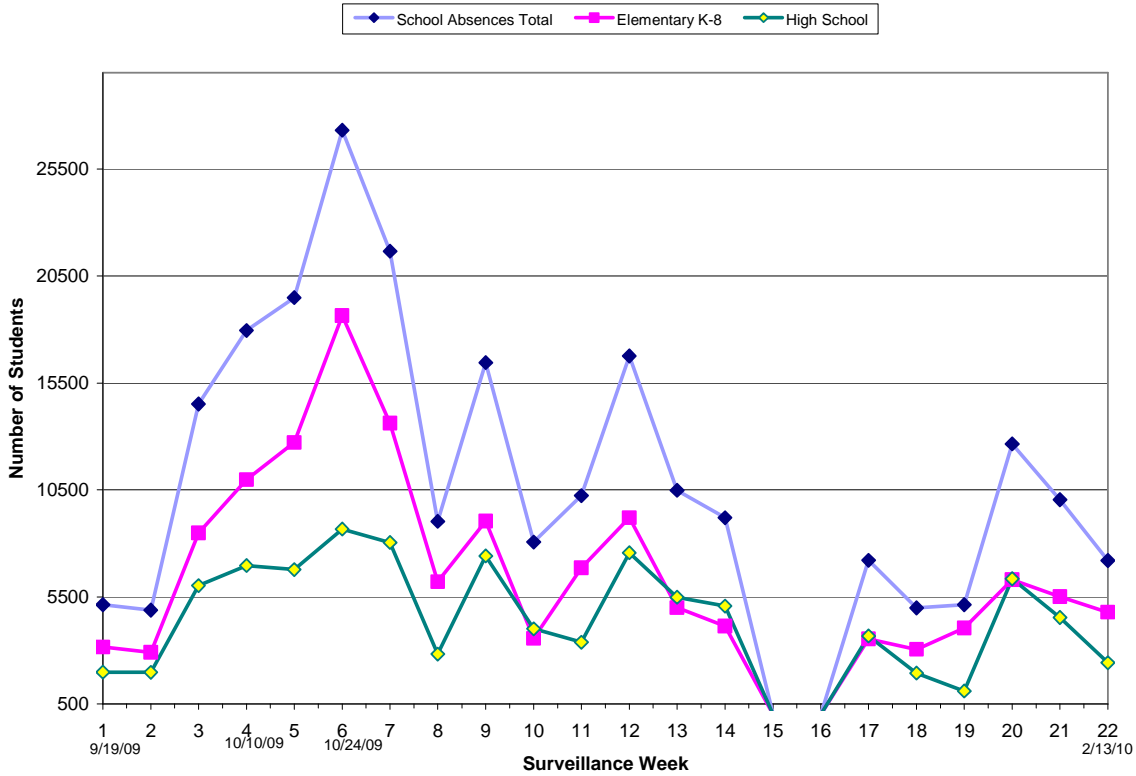
Number of pneumonia/influenza deaths reported to CDC by the Akron Health Department, Barberton Health Department and Summit County Health District

Number of confirmed influenza hospitalizations at Summit County hospitals

The percent of respiratory & constitutional visits per week from two hospitals that electronically report ED visits which are categorized into respiratory or constitutional syndrome based on chief complaint.

This report was created by the Akron Health Department's Office of Epidemiology, on February 22, 2010. For questions, please contact Courtney Hudson at 330.375.2988 ext. 3122. Reporting from participants may not be complete each week. Numbers may change as updated reports are received.

School Absences 2009-2010



Summit County Influenza Surveillance 2009-2010

